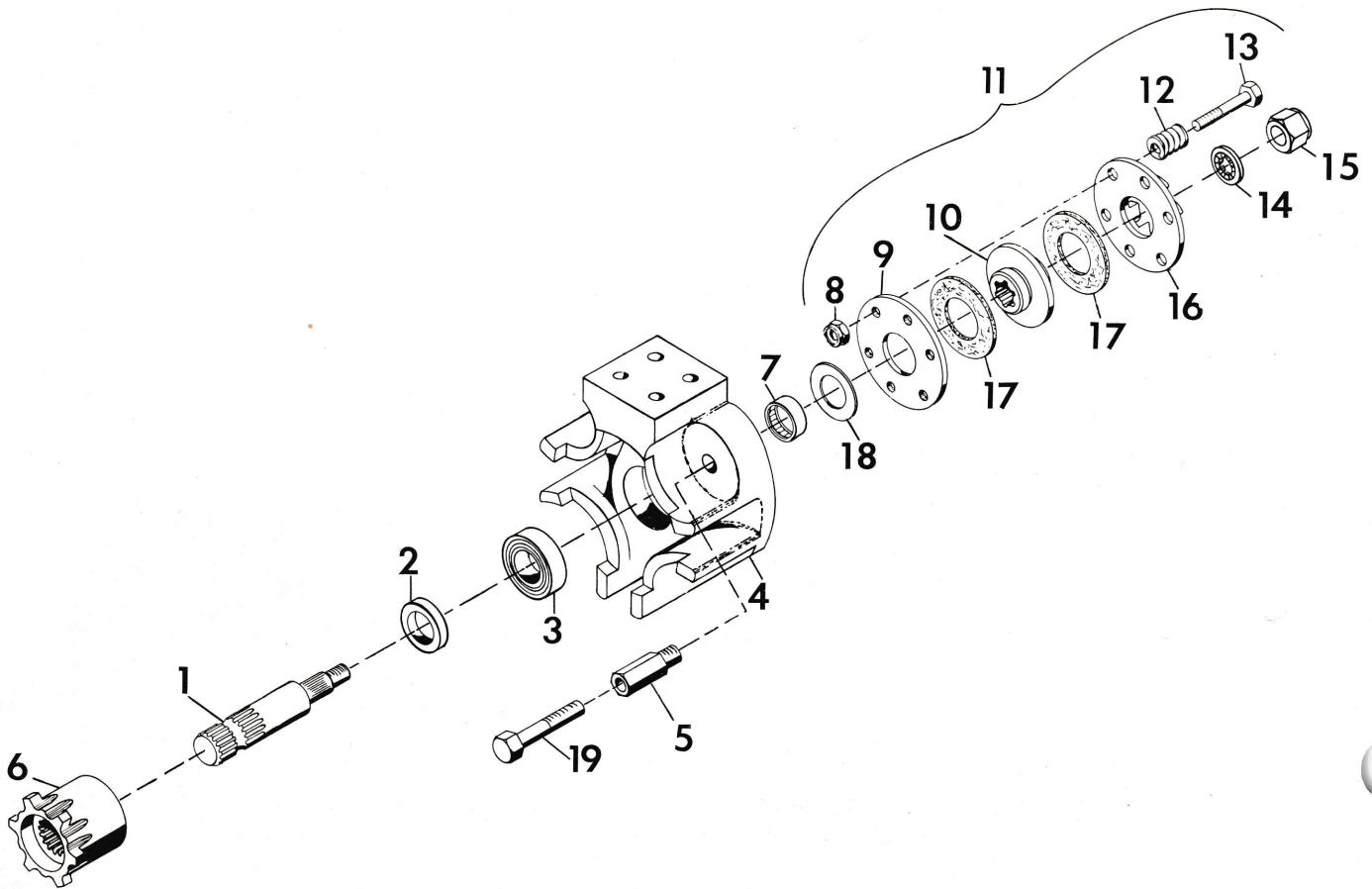
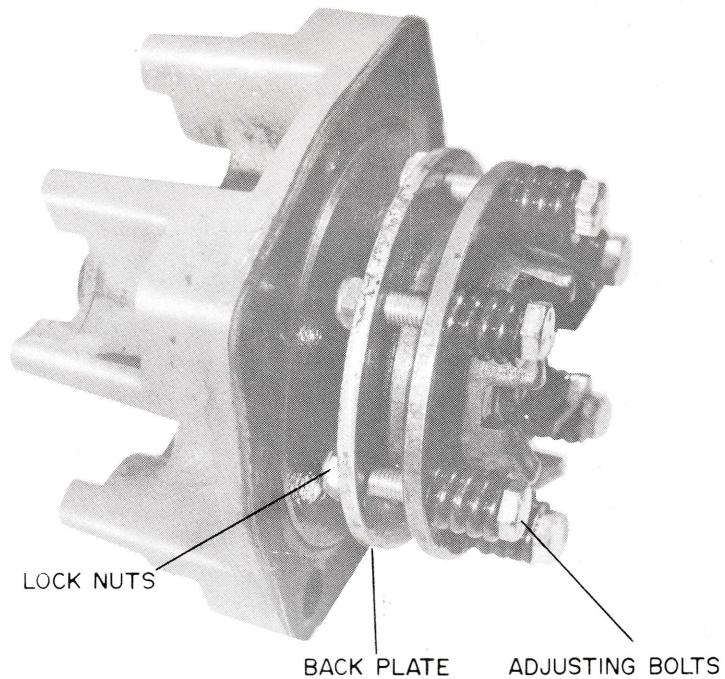


TO CONTINUE ITS PROGRAM OF QUALITY AND DESIGN IMPROVEMENTS, THE MANUFACTURER RESERVES THE RIGHT TO CHANGE SPECIFICATIONS, DESIGNS AND PRICES WITHOUT NOTICE AND WITHOUT INCURRING OBLIGATION



<u>ITEM NO.</u>	<u>PART NO.</u>	<u>DESCRIPTION</u>
1	22482	Shaft, Quick Hitch
2	11841	Ring, Retaining
3	11293	Bearing, Ball; 1.000 x 2.000 x .562
4	22438	Adapter, Quick Hitch
5	22479	Stud, Quick Hitch
6	21343	Attachment, Dog
7	11227	Bearing, Needle; 1.000 x 1.250 x .500
8	18277	Nut, Lock; 5/16-24 L.T.
9	12868	Plate, Back
10	22480	Plate, Drive
11	22484	Assembly, Clutch Attachment
12	12871	Spring, Compression; 3/4 x 2200 Lb/in
13	181618	Bolt, Hex; 5/16-24 x 1-3/4
14	138557	Washer, Lock; 5/8 Int. Tooth
15	13419	Nut, Flywheel
16	12867	Dog, Plate
17	12870	Washer, Friction
18	11983	Bearing, Thrust; 1.012 x 1.750 x .125
19	180173	Bolt, Hex; 1/2-13 x 1.0



The Attachment Adapter Kit is completely factory assembled and needs only to be bolted to the advance casting of the tractor.

The assembly is bolted to the tractor with the four quick hitch studs (item 5). The side with the four holes is the top. These holes are for mounting the quick hitch pin when required for some attachments. The quick hitch pin IS NOT a part of this kit.

SLIP CLUTCH ADJUSTMENT

The slip clutch is designed to minimize damage when attachment strikes an immovable object and requires some maintenance.

To adjust the clutch, the Attachment Adapter assembly will first have to be removed from the tractor.

Remove any attachments from tractor and rest tractor on rear hitch to prevent loss of oil from transmission when assembly is removed. Remove the four quick hitch studs securing assembly to tractor and remove the assembly.

To adjust the clutch, loosen the six locknuts. Tighten the six bolts all the way in to the threaded back plate. Back off each bolt $\frac{1}{2}$ turn counter-clockwise. Lock the bolts in position with the locknuts.

LIMITED WARRANTY

This Limited Warranty is issued by Clarke-Gravely Corporation, Gravely Division, and consists of the following terms:

1. Only the original purchaser of new Gravely equipment is covered by this Warranty.
2. This Warranty covers repair or replacement of parts manufactured by Gravely which are defective in material or workmanship. Gravely will pay for parts and labor only.
3. The Warranty starts the date of purchase and lasts for NINETY (90) DAYS for products used in commercial applications, and TWELVE (12) MONTHS for products used by the owner to maintain his personal residence. Commercial means any use other than to maintain the grounds around the personal residence of the owner of the product.
4. Some components of Gravely equipment are not covered by the Gravely Warranty. These components are covered by the original manufacturer's warranty, they are:
 - (a) Engines - Onan and Briggs & Stratton
 - (b) Tires - Goodyear, Goodrich & Carlisle
 - (c) 34" Mower Gear Box - Peerless
5. To obtain warranty service on Gravely equipment including components not manufactured by Gravely, use this procedure:
 - (a) Notify the Gravely dealer from whom you purchased the equipment.
 - (b) If you have moved and it is not convenient to notify the selling dealer, notify the nearest Gravely dealer. You should supply this dealer with a copy of the bill of sale as proof of the date of purchase.
 - (c) Make arrangements to have the equipment delivered to the dealer (refer to paragraph 6 (a) below).
 - (d) If you have any questions concerning the Gravely Warranty, they should be referred to:

Gravely Division
Clarke-Gravely Corporation
One Gravely Lane
Clemmons, North Carolina 27012
Attn: Manager of Customer Services
 - (e) Warranty service on Gravely equipment must be performed by an authorized Gravely dealer or Gravely factory branch.
6. This Warranty does not cover the following:
 - (a) Transportation between owner's home or place of business and the dealership. If the dealer provides the transportation of the equipment, he will charge the owner his usual rate for such service.
 - (b) Normal maintenance services and normal replacement of items such as spark plugs, belts, oil, oil filters, air filters, and mower blades.
7. GRAVELY MAKES NO OTHER EXPRESS WARRANTIES. ANY IMPLIED WARRANTIES, INCLUDING WARRANTIES AS TO MERCHANTABILITY OR FITNESS FOR A PARTICULAR PURPOSE, ARE LIMITED IN DURATION TO THE PERIOD SET OUT IN PARAGRAPH 3 ABOVE. SOME STATES DO NOT ALLOW LIMITATIONS ON HOW LONG AN IMPLIED WARRANTY LASTS, SO THE ABOVE STATEMENT MAY NOT APPLY TO YOU.
8. GRAVELY SHALL HAVE NO RESPONSIBILITY FOR INCIDENTAL OR CONSEQUENTIAL DAMAGES RESULTING FROM THE BREACH OF ANY WARRANTY, INCLUDING, BUT NOT LIMITED TO, INCONVENIENCE, RENTAL OR PURCHASE OF REPLACEMENT EQUIPMENT, LOSS OF PROFITS OR COMMERCIAL LOSS. SOME STATES DO NOT ALLOW THE EXCLUSION OR LIMITATION OF INCIDENTAL OR CONSEQUENTIAL DAMAGES, SO THE ABOVE LIMITATION OR EXCLUSION MAY NOT APPLY TO YOU.
9. This Warranty gives you specific legal rights, and you may have other rights which vary from state to state.
10. A Gravely equipment registration card is supplied with each Gravely tractor or major attachment. Please complete the card and return it to Gravely at the address listed on the card. The equipment registration card will be used by Gravely for:
 - (a) Recording date of purchase.
 - (b) Notification of owners in compliance with the Consumer Product Safety Act, should any notification be necessary.The return of registration card is not required in order to take advantage of this Warranty.
11. This Warranty is not subject to change or modification by anyone, including Gravely dealers and no Gravely dealer is authorized to make any representations or promises on Gravely's behalf.

 **GRAVELY**

One Gravely Lane
Clemmons, N. C. 27012